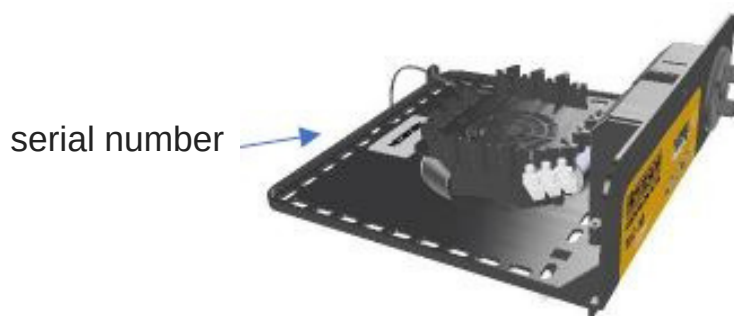
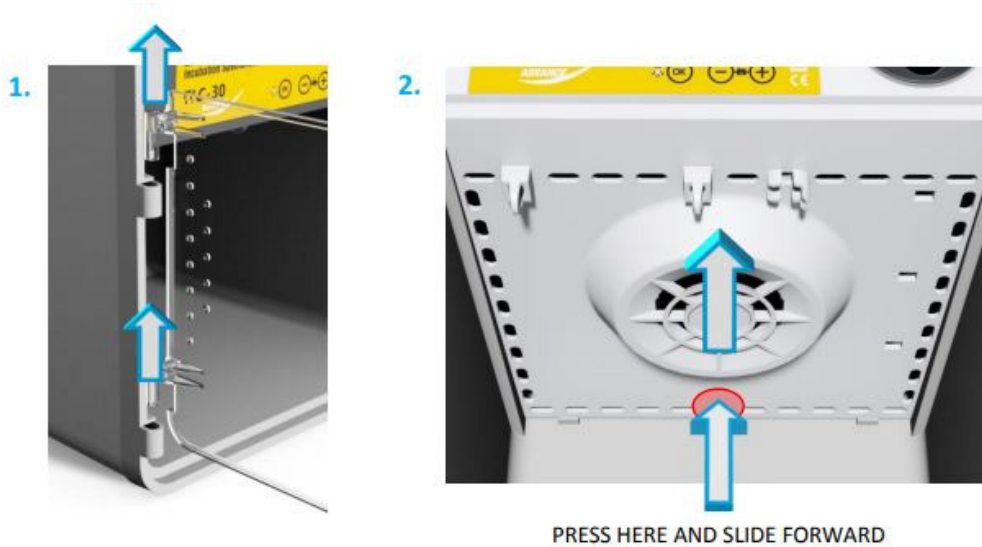


How to find the serial number on your TLC-30 incubator



The serial number is on the box the TLC arrived in and also inside the heater housing, it's very easy to find once you know where it is. To remove the chassis firstly remove the door by simply lifting it off, then slide your hand to the back of the incubator and press where shown, then slide the chassis forward.



Once you have found your serial number please record it on page 2 of your instructions, see below:

To register your new Brinsea product please visit www.brinsea.co.uk within 30 days of purchase and follow the link on the home page to qualify for your free, extended 3-year guarantee. Sign up for the Brinsea Newsletter to receive the latest news and information.

Record your appliance serial number here _____

(see label on carton and chassis)

